

Schul-Sozial-Arbeit

in the Gross-Gerau district



Englisch

What is school social work?

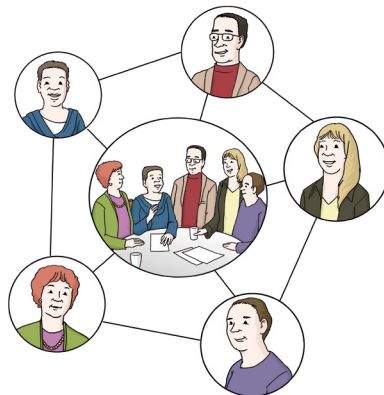
What is school social work?
Youth welfare services in the Gross-Gerau district also provide school social work.
That means: social workers also work at the school.
School social work is a part of everyday school life.



School social workers work together with different partners:

- With the school.
- With the cities and communities.
- With the state school authority.

This group of partners is called:
the school network community (Netz-Werk Schul-Gemeinde).



Who else does the school social work partner with?

The school social work works together with other youth welfare services.
For example with social services in general.
Or with advice services.
For example with the education advice centre.



Why is school social work important?

School social work is important for children and youths:

- In their upbringing.
- In education.

Who is school social work meant for?

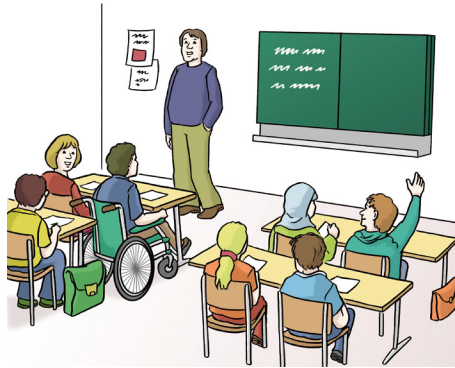
- For pupils.
- For parents.
- And for the school.



What does school social work offer at schools?

For the whole class:

Support in social learning.
Social learning means:
Learning to treat each other fairly.



For individual pupils:

Help with problems at school.
Or with other problems.
For example family problems.



For groups of pupils at the school:

Help with diverse topics.

For example:

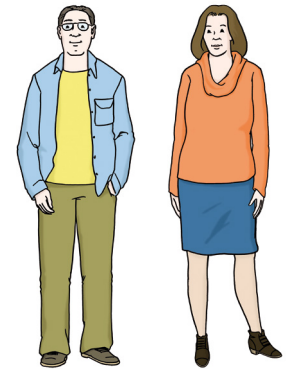
- When parents get divorced.
- Or how to deal with problems.
- Or how to organise yourself well.

So that you can cope well at school.



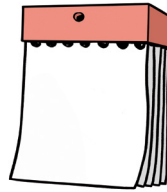
For parents:

School social work also advises pupils' parents.



How does school social work function?

- Sometimes a problem is urgent: We can also make an appointment quickly. For example at school break-time. But also after school hours.



- Sometimes it is nicer to hold a discussion elsewhere: We also come to families.
- Families want the best for their children: We talk to individuals. Or with the whole family.



- We check: What does the child need? Or the family?
- We take time: We listen and advise. Our services are voluntary.



- Our advice sessions are confidential: We don't pass on any information.



How to find school social work:

Ask at the school. Or look online.

Search: Standorte (Locations) under www.kreisgg.de/bildung/schulsozialarbeit

Or ask us.



Telephone: 0 61 52 - 98 9 - 603



E-Mail: schulsozialarbeit@kreisgg.de

We look forward to working together

- with pupils
- with teachers
- and with parents.

Issuer:

Kreisausschuss des Kreises Groß-Gerau

Fachdienst Schulsozialarbeit

Wilhelm-Seipp-Str. 4

64521 Groß-Gerau

schulsozialarbeit@kreisgg.de

**Legal notice:**

Text: Übersetzung und Prüfung auf Leichte

Sprache: © Lebenshilfe Büro für Leichte Sprache Ruhrgebiet GmbH, 2018, www.leichte-sprache-ruhrgebiet.de,

Bilder: © Lebenshilfe für Menschen mit geistiger Behinderung Bremen e.V., Illustrator Stefan Albers, Atelier Fleetinsel, 2013, © European Easy-to-Read

Logo: Inclusion Europe, © Valuing People clipart collection, <http://www.valuingpeopleclipart.org.uk>